



PT46X5 Series



Features

- Adjustable zero and span
- Accuracy better than $\pm 0.5\%$
- Dymax[®] coated stainless steel wetted parts
- 0 - 5 Vdc and 1 - 6 Vdc outputs
- 0 - 500 to 0 - 30,000 psi
- Internal 80% shunt calibrations

Benefits

- Adapt transmitter to process conditions
- Repeatable, reliable pressure measurements
- Superior abrasion resistance
- Direct input to supervisory control systems
- Wide variety of pressure ranges
- Easy to calibrate and use

Description

The PT46X5 Series transmitter is a $\pm 0.5\%$ sensor ideal for general purpose melt pressure measurements requiring simple installation, repeatability and reliability. The PT46X5 transmitters provide the industry standard 0 - 5 Vdc amplified signal designed to work with DCS and PLCs, 1 - 6 Vdc outputs are also available. The PT46X5 comes equipped with zero and span pots to adapt the transmitter to process conditions. Optional thermocouple or RTD configurations are available to provide melt temperature. The PT46X5 features a 1/2-20 UNF thread for installation in standard transducer mounting holes and can be supplied with a variety of electrical connections.

Specifications

PERFORMANCE CHARACTERISTICS

Outputs: PT46X5 - 0 - 5 Vdc

PT46X5B - 1 - 6 Vdc

Input Voltage: 11 - 36 Vdc

Combined Error: $\pm 0.5\%$ FSO,
(Including Linearity, Repeatability & Hysteresis)

Repeatability: $\pm 0.2\%$ FSO

Configuration: Four-arm bonded foil Wheatstone bridge strain gage

Load Resistance: 2000 Ohms minimum

Over Pressure: 2 X FSO or 35,000 psi (whichever is less)

Zero Balance Adjustment Range: $\pm 15\%$

Span Adjustment Range: $\pm 15\%$

Internal Shunt Calibration (R-Cal): 80% FSO $\pm 0.5\%$

TEMPERATURE & MECHANICAL CHARACTERISTICS

Max Diaphragm Temperature: 750°F (400°C)

Zero Shift (due to temperature change):

25 psi/100°F Typical (45 psi/100°C)

Electronics Operating Temperature:

-20°F to 185°F (-25°C to 85°C)

Zero Shift Due to Temperature Change:

$\pm 0.05\%$ FS/°F max ($\pm 0.10\%$ FS/°C max)

Span Shift Due to Temperature Change:

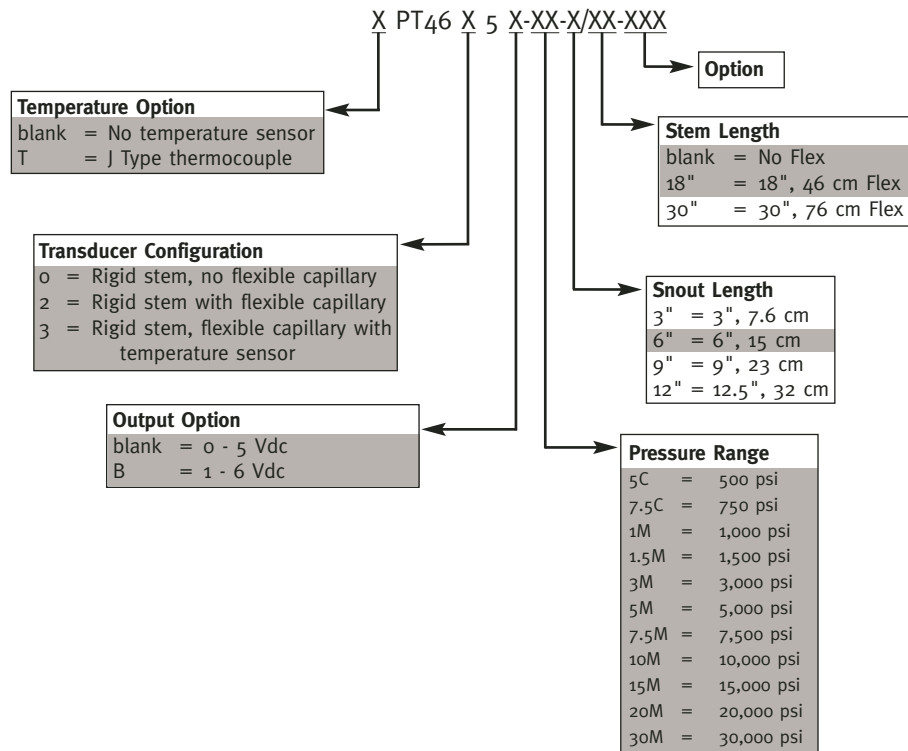
$\pm 0.02\%$ FS/°F max ($\pm 0.04\%$ FS/°C max)

Mounting Torque: 500 inch/lbs. maximum

Standard Wetted Parts: Dymax[®] coated 15-5 PH SST

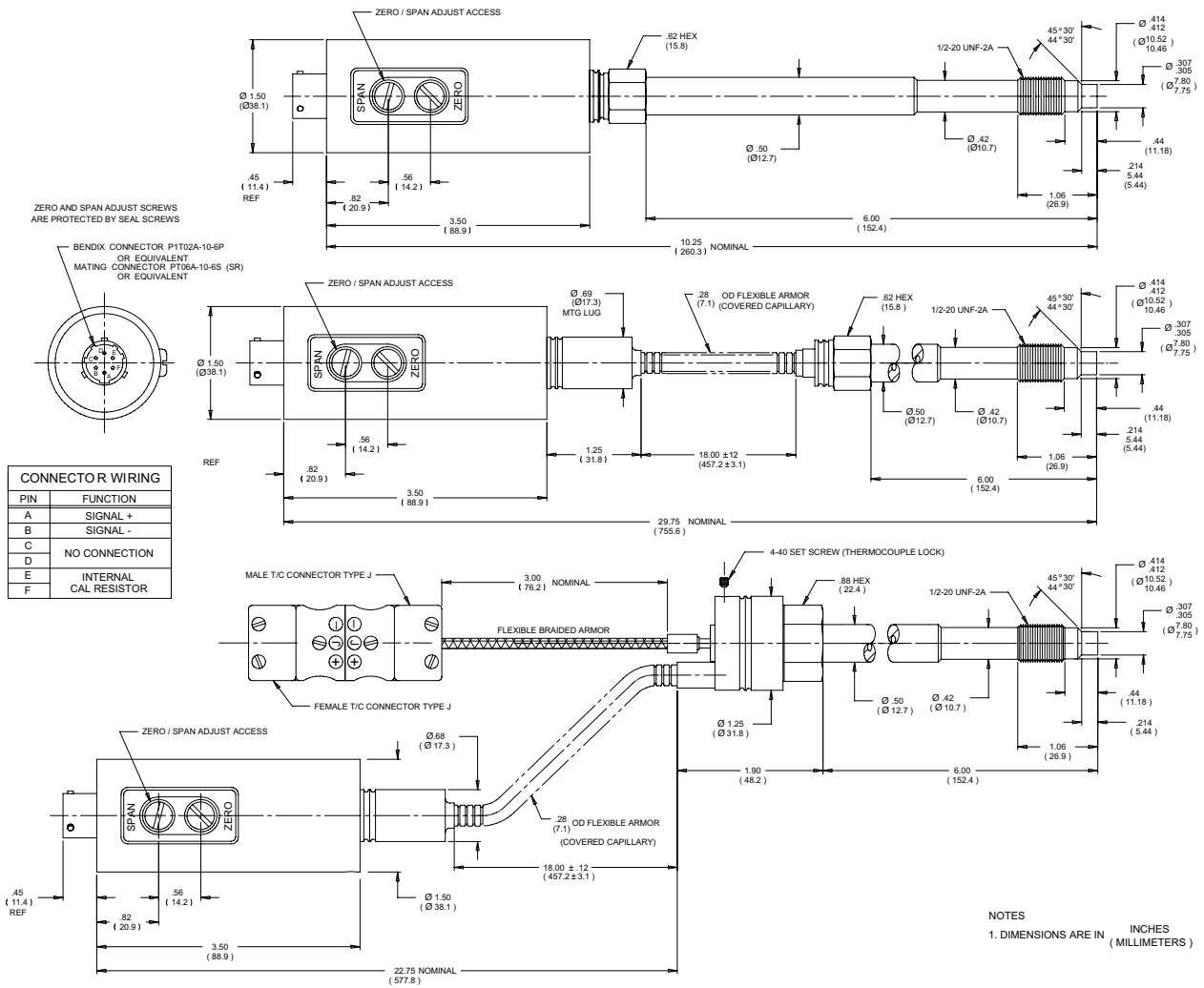


Ordering Guide



Standard mating connector Dynisco P/N 711600 or 6-pin mating cable assembly.

Shaded sections refer to standard configurations. Accuracy may be affected if non-standard configurations are used. For additional options please consult factory.



All dimensions are inches (mm).