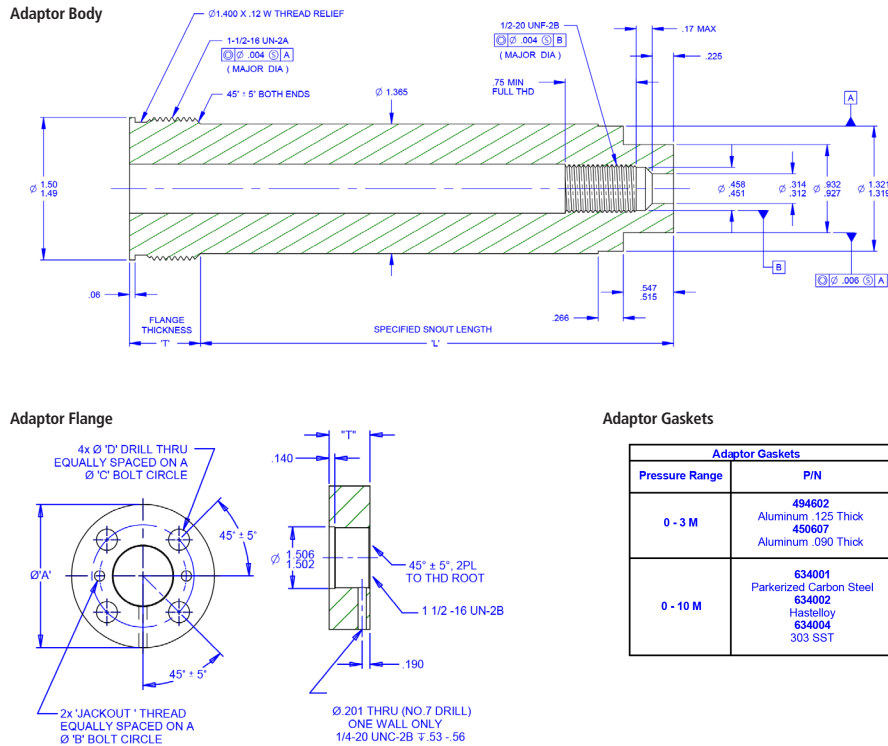


Performance Characteristics	
Pressure range:	Sensor dependent (min) to 10,000psi (max)
Temperature range:	Sensor dependent
Mechanical & Packaging	
Materials of Construction	
Adaptor body & flange:	17-4 Stainless Steel
Gasket (seal):	Pressure dependant
Approvals & Certifications	
ISO:	ISO 9001: 2008 production environment
Compatible with approved sensors:	Yes

Ordering Guide for Button Seal Process Adapter

The Button Seal Process Adapter is application dependent. Adaptors are made to order depending on the interface sizing. The part number will be determined after an engineering review of application specifications.

Dimensions



All dimensions are inches (mm) unless otherwise specified.
 ©2016. Dynisco reserves the right to make changes without notice.
 Refer to www.dynisco.com for access to Operator Manual and other support documentation.
 DSBUTTONSEAL
 Rev: 1216



www.dynisco.com

Dynisco

38 Forge Parkway
 Franklin, MA 02038
 USA

Hotline 1-800-Dynisco
www.dynisco.com
 Phone +1 508 541 9400
 Fax +1 508 541 6206
 Email infoinst@dynisco.com

Dynisco Europe, GmbH

Pfaffemstr. 21 Phone +49 7131 297 0
 74078 Hellbronn Fax +49 7131 297 166
 Germany Email dyniscoeurope@dynisco.com

Dynisco Shanghai

Building 7A, No. 568 Phone +86 21 34074072-819
 Longpan Rd Malu Toll Free +86 400 728 9117
 Jiading, 201801 China Fax +86 21 34074025