

# LMI 5000 LaVA Suite

## Quick Start Manual

LaVA  
● ● ● ● ● ●  
SUITE



**Manual Part Number: M0762**  
**Original Language Version**  
**Revision 1.0**  
**10/10/2013**

**Notice**

This manual contains descriptions, drawings and specifications for an Alpha Technologies Product. Equipment or products made prior to or subsequent to the publication date of this manual may have parts, features, options or configurations that are not covered in this manual. Specifications contained herein are subject to change by Alpha Technologies without prior notice. Alpha Technologies is not responsible for errors or omissions that may be contained herein or for incidental or consequential damages in connection with the furnishing or use of this information. The information contained in this manual is the property of Alpha Technologies, unless otherwise stated.

Comments or suggestions for possible improvement to the manual are appreciated and may be sent to the following location:



**3030 Gilchrist Rd  
Akron, OH 44305  
Phone +1 330 745 1641  
Fax +1 330 848 7326  
[www.alpha-technologies.com](http://www.alpha-technologies.com)**

Revision	Date	Author	Comments
1.0	October 10, 2013	Michael Driscoll	Original version; initial release

## Table of Contents

How to Install Software .....	4
LaVA Suite Installation.....	4
Logging into LaVA Suite.....	7
Operation.....	8
LaVA Suite Main Window – Test Setup .....	8
Run Test Window .....	8
Analyze Result Window .....	9
Software Icons .....	9
How to Change Instrument Configuration Options .....	10
How to View General Instrument Information and Calibration Information .....	11
How to Create a New Test or Copy an Existing Test .....	12
How to delete a Test .....	13
How to Switch Between Work Offline and Connect to an Instrument.....	14
Working in Offline Mode .....	14
How to Switch Users .....	15
How to Add and Remove Users.....	16
How to Lock and Unlock LaVA Suite.....	17
How to Run a Test .....	18
How to Abort a Test in Progress.....	20
How to View, Print, or Save Reports.....	21
How to Backup and Restore the Database .....	22
How to View Information about LaVA Suite.....	22

# Quick Start Manual

## How to Install Software



**NOTE:** Refer to the ReadmeLaVA.txt, located on the Software Installation DVD, for general release information, minimum computer requirements, things to do before installing software, upgrading from a previous version, installation notes, default passwords, and known problems.

### LaVA Suite Installation

1. Refer to the ReadmeLaVA.txt, located on the software installation DVD, prior to installing software.
2. Insert the LaVA Suite DVD into the PC and run setup.exe.
3. Follow on-screen prompts to install software.
4. When prompted about the Microsoft SQL Server installation select **Yes** to install if no other SQL Server is installed on the PC. If there is already an SQL Server installed and there's a preference to keep the current version then select **No**.

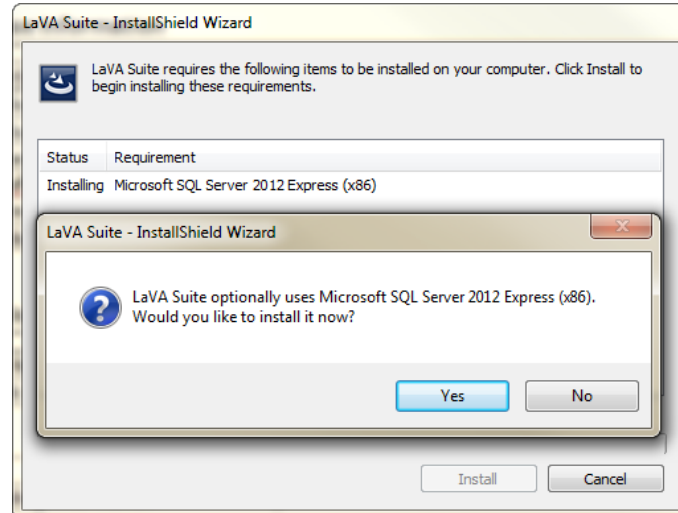
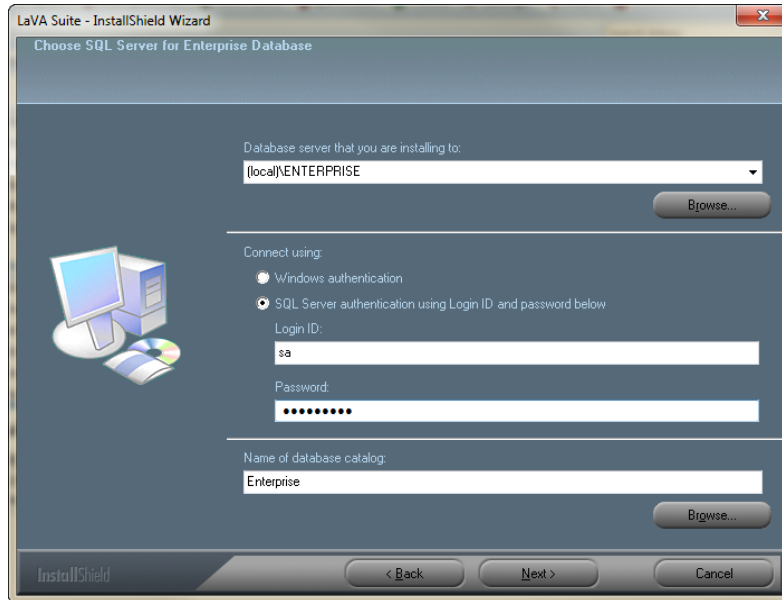


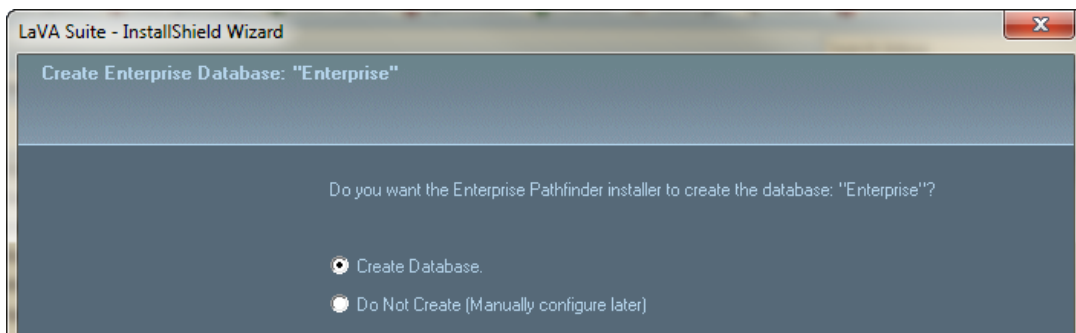
Figure 1

- When prompted to log into the SQL Server for Enterprise Database select either **Windows Authentication** if the user has administration rights to the PC or select **SQL Server Authentication using Login ID and Password below** and type Login ID: **sa** and Password: **Alpha2000**.



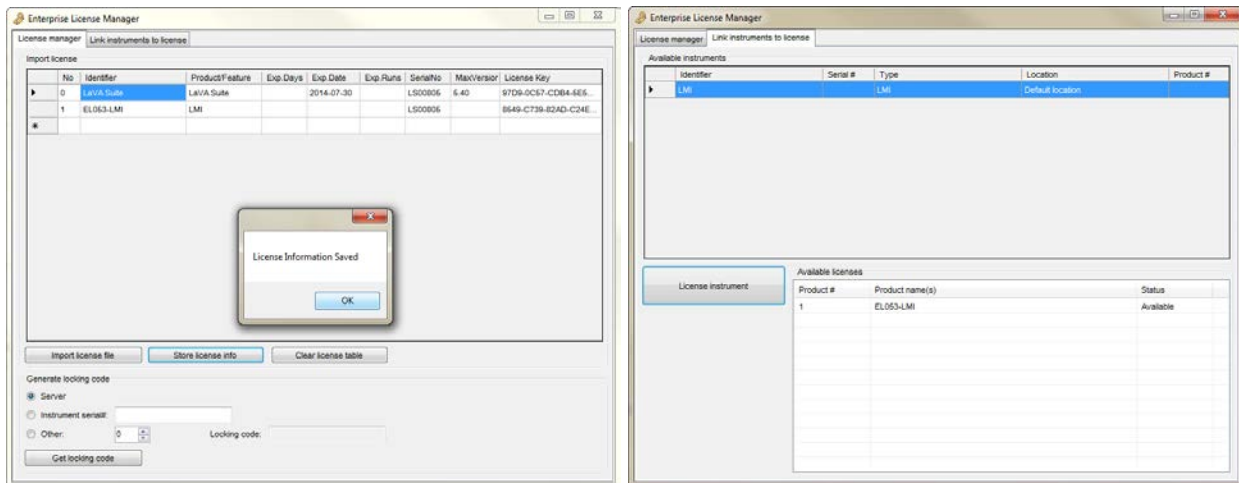
**Figure 2**

- When prompted to Create Enterprise Database select **Create Database**.



**Figure 3**

7. After installation completes enter the license from the License CD.
  - a. Select **Programs/Dynisco Instruments/License Manager**
  - b. Login as **admin/admin**
  - c. Select **Open Advanced Editor**
  - d. Select **Import License File**
  - e. Navigate to the License file located on the License CD and select this file
  - f. Verify the license installed correctly and select **Store License Info**
  - g. Select the tab **Link Instruments to license**
  - h. Select the instrument LMI from the list and select the corresponding instrument from the list in the bottom right and select **License Instrument**



**Figure 4**

8. Apply any patches included on the License CD
  - a. Navigate to the files located on the License CD and select folder **V5xx patch/Bin**
  - b. Copy and Paste the contents of the folder in the previous step to **C:\Program Files\LaVA\_Suite\bin**. This will replace files in that directory and update the software with available patches.

## Logging into LaVA Suite

1. Select LaVA Suite from the **Programs/Dynisco Instruments/LaVA Suite**
2. Login to the software using the default user names and passwords located in the ReadmeLaVA.txt file.

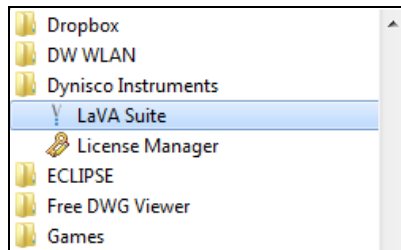


Figure 5

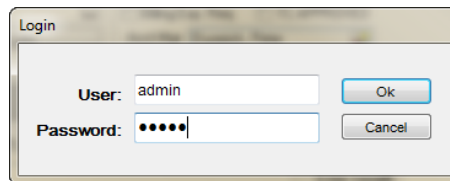


Figure 6

3. Select to either log into **Work Offline** or **LMI** (This will be the name of the instrument).
  - a. **LMI** – This will show the name of the instrument as programmed on the LMI5000 Instrument touch screen.
  - b. **Work Offline** – Offline is normally used when not connected to an instrument or when reviewing test data from all connected instruments. When using this mode not all toolbars will be available.



**NOTE:** The software license is attached to the name of the instrument. Do not change the name of the instrument from the instrument touch screen; doing so will cause the LaVA Suite license to become invalid.

*Select a device. If the device is not present check the connection and the device is powered.* X

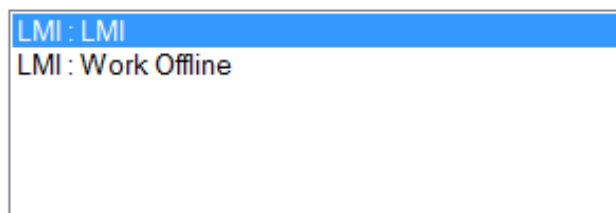


Figure 7

# Operation

## LaVA Suite Main Window – Test Setup

The Main Window has navigation options in the top left corner and icons across the top right corner.

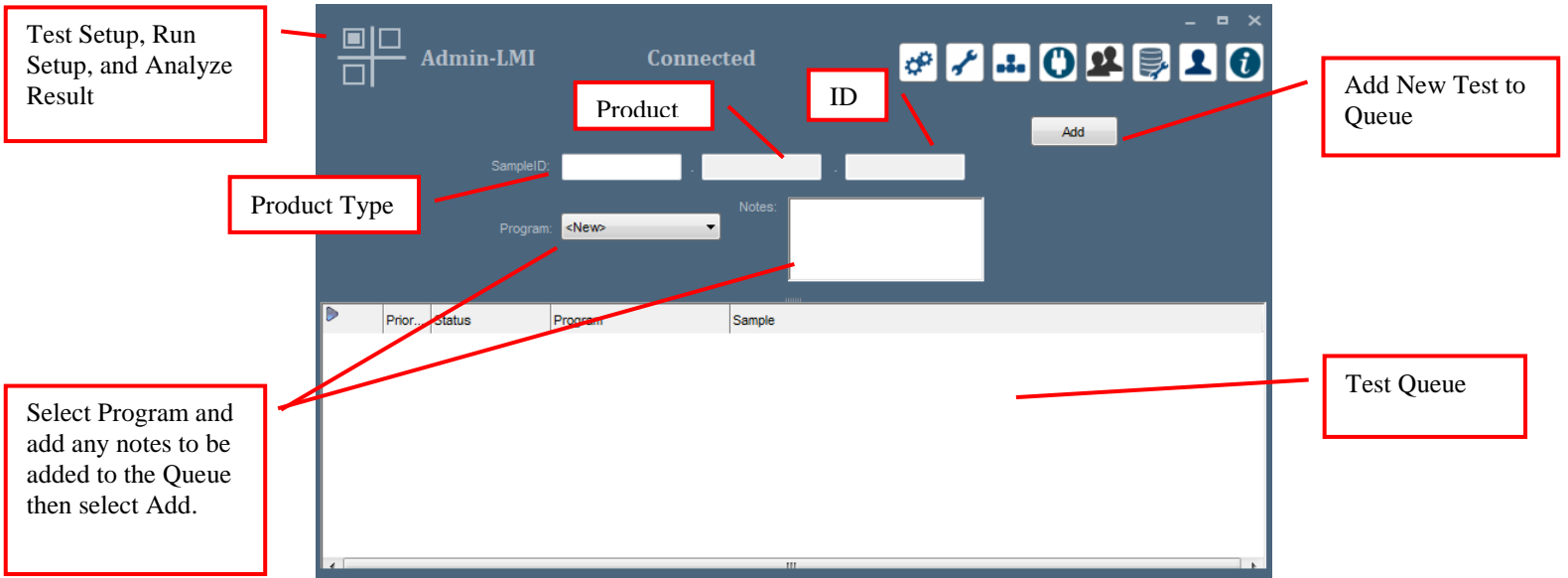


Figure 8

## Run Test Window

The Run Test Window is used to view the Temperature, Encoder Distance, Test Queue, Test parameters, Test Status, and Series Data.

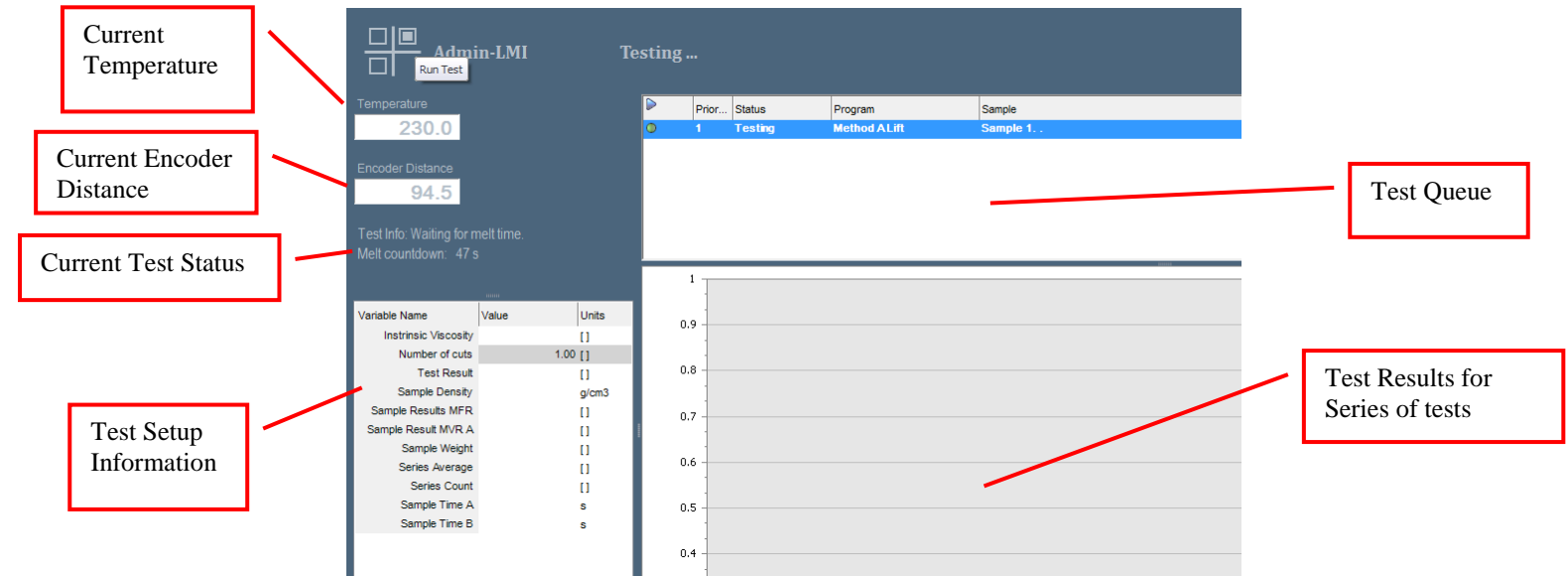


Figure 9



## Analyze Result Window

The Analyze Result window shows the results of the tests in Online or Offline mode.

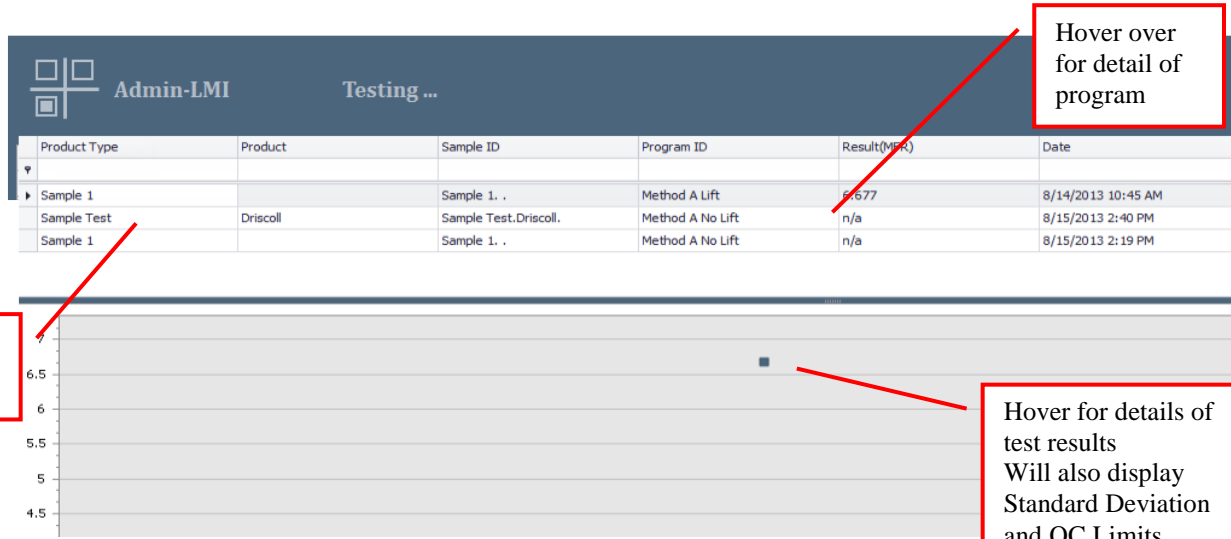


Figure 10

## Software Icons

Double click on the icon to select the item.

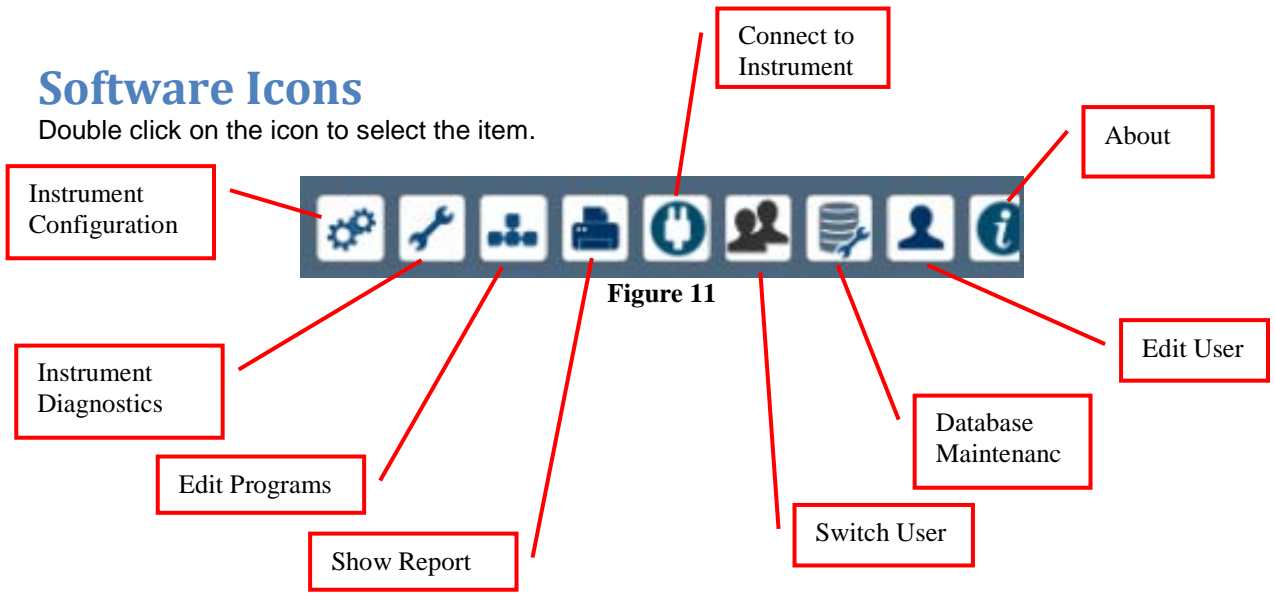


Figure 11

## How to Change Instrument Configuration Options

1. Select **Instrument Configuration** from the Toolbar.



Figure 12

2. Adjust the **Configuration Options** as desired. See **LMI 5000 User Manual (M0726)** for full descriptions.

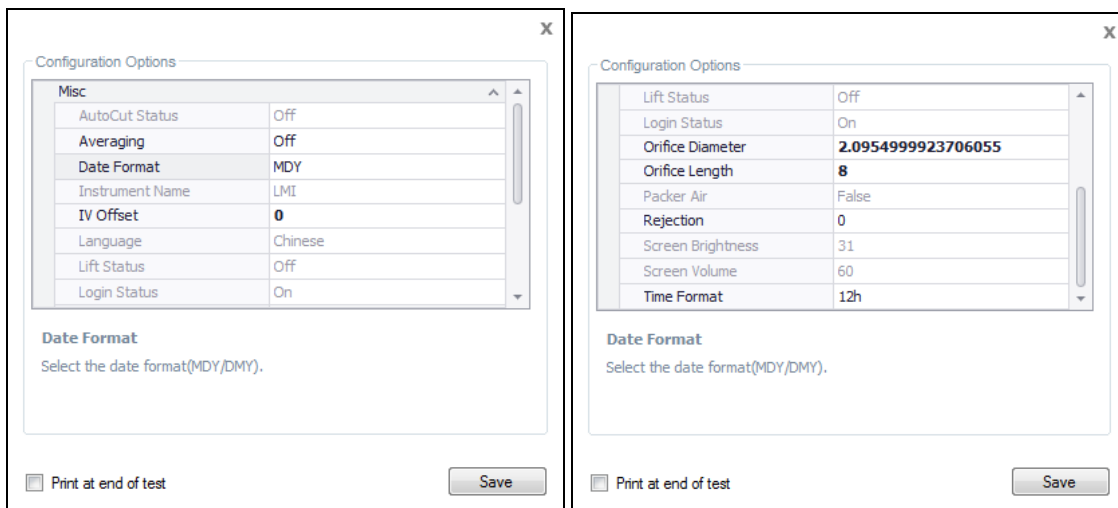


Figure 13

## How to View General Instrument Information and Calibration Information

1. Select **Instrument Diagnostics** from the Toolbar.



Figure 14

2. The General tab allows the user to view the **Firmware version**, **CPU version**, **Machine ID** and **Database version**. It also shows the current status of the Lift, Packer, Encoder, Auto Cut and Heater, if they are installed. Select **Refresh** to refresh the status lights.

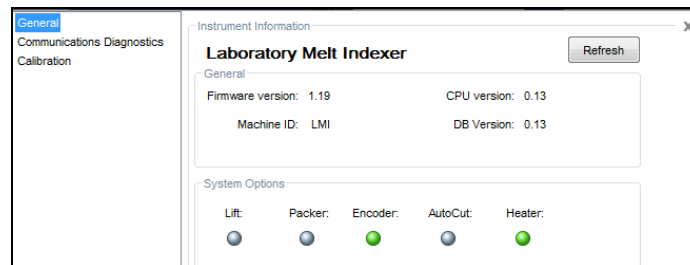


Figure 15

3. The **Communication Diagnostics** tab will not be used normally by the operator. If instructed by Alpha Technologies Support personnel to **Start Logging**, this will collect logs that can be used for troubleshooting problems.
4. The **Calibration** tab shows the most recent **RTD Calibration**, **Touch Screen Calibration**, and **Encoder Offset**. It also displays the recommended **Next Service Date**.

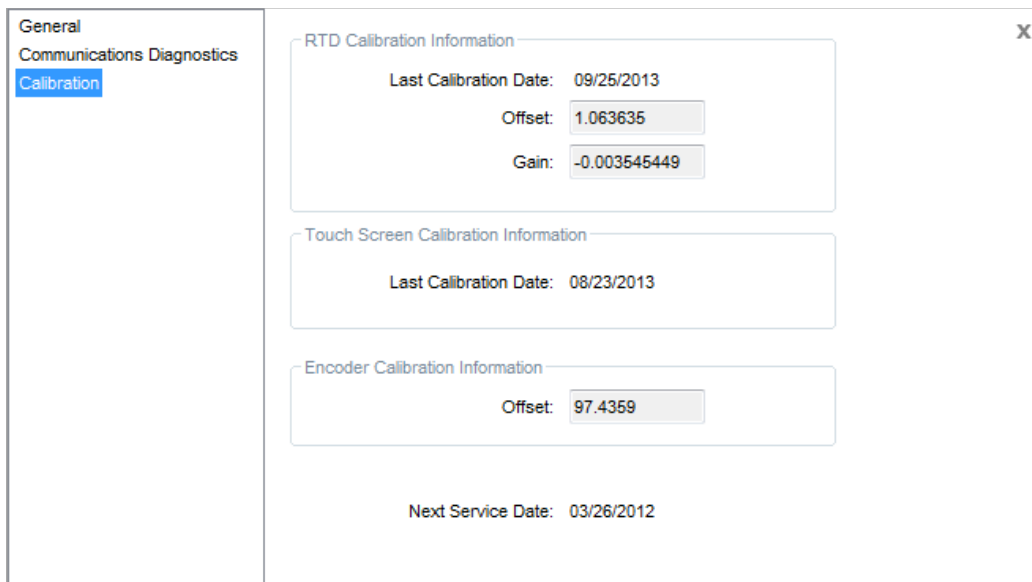


Figure 16

## How to Create a New Test or Copy an Existing Test

1. Select **Edit Programs** from the toolbar.

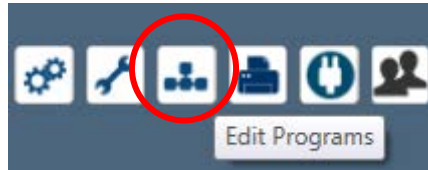


Figure 17

2. Select **New**, to create a new test, or select the test to be copied and select **Copy**, to create a copy of an existing test.

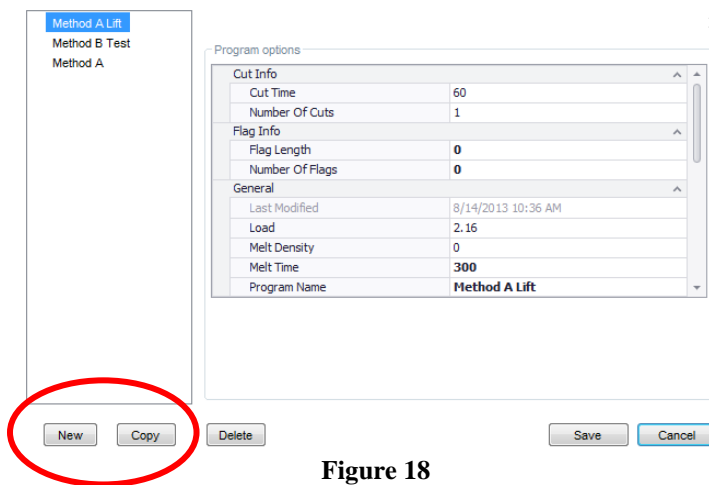


Figure 18

3. Add or modify the **Program options** for the desired test conditions.
4. Add or modify the **Program Name** for this new test setup. **Maximum length is 13 characters.**

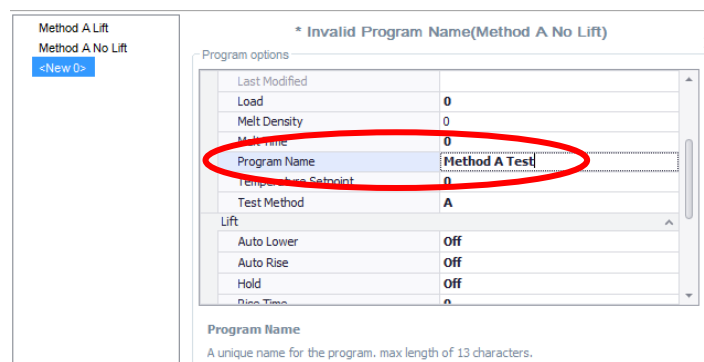
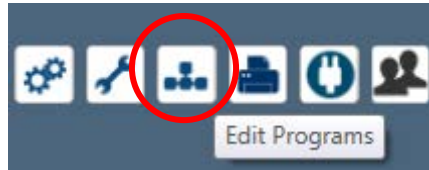


Figure 19

5. When all **Program Options** have been entered select **Save**.

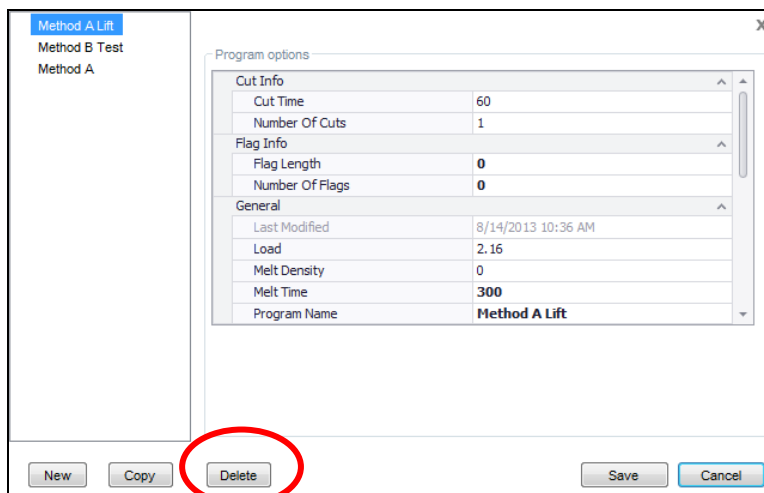
## How to delete a Test

1. Select **Edit Programs** from the toolbar.



**Figure 20**

2. Select the test to be deleted and select **Delete**.



**Figure 21**

## How to Switch Between Work Offline and Connect to an Instrument

1. With LaVA Suite open, if the user chooses to switch to another instrument, or Work Offline, select **Connect to Instrument** from the toolbar. The LMI5000 is capable of connecting up to 8 instruments using the same computer and database, however only one LMI can be connected at a time.

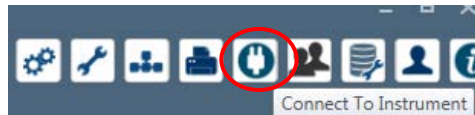


Figure 22

2. Select to either log into **Work Offline** or **LMI** (This will be the name of the instrument).

Select a device. If the device is not present check the connection and the device is powered. X

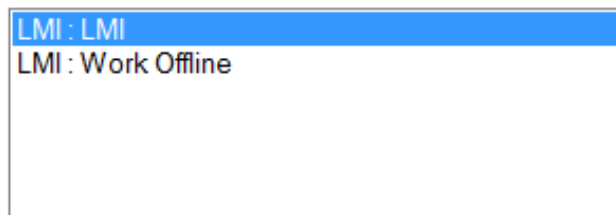


Figure 23

## Working in Offline Mode

Offline is normally used when not connected to an instrument or when reviewing test data in the database from all connected instruments. When using this mode not all toolbars will be available, only **Connect to Instrument**, **Switch User**, **Database Maintenance**, **Edit User**, **About** and **Show Report** are available.

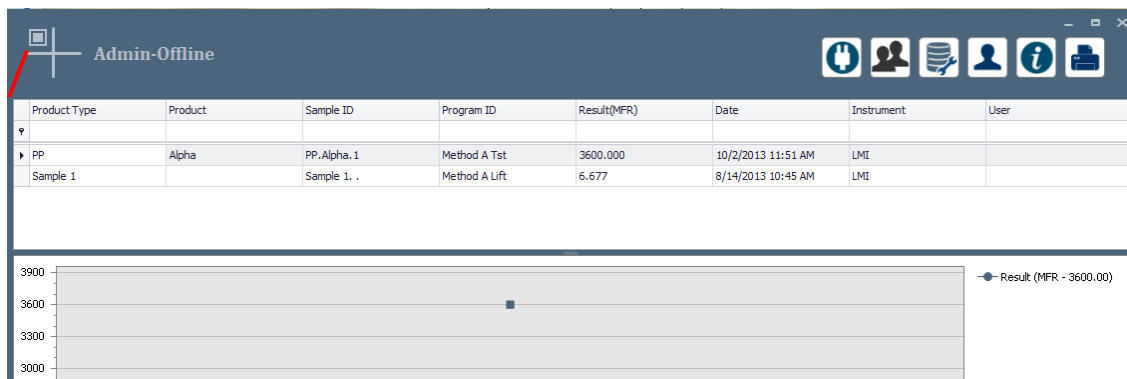


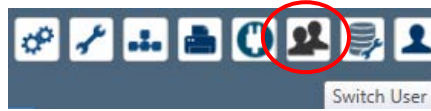
Figure 24

Only Analyze Result is available

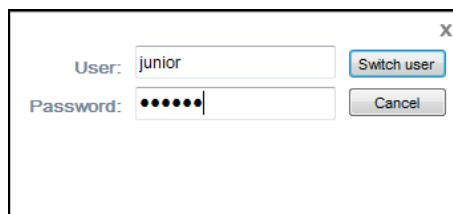
## How to Switch Users

Allows the current user to log off and log in as another user.

1. Select **Switch User** from the toolbar.

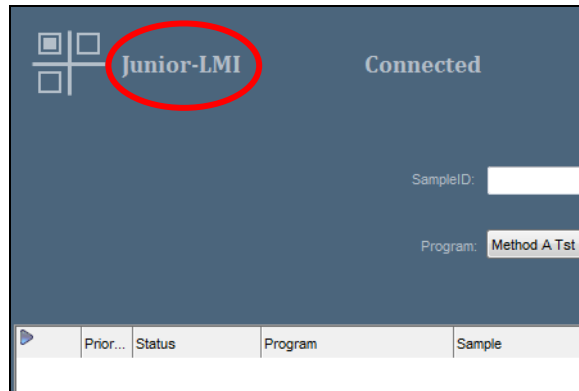


2. Enter the User and Password of the user to be logged into LaVA Suite and select **Switch User**.



**Figure 25**

3. The current logged in user will be displayed in the upper left corner of the software.



**Figure 26**

## How to Add and Remove Users

1. Select **Edit User** from the toolbar.



Figure 27

2. Select **Add** to add a new user. **New User** will show up in the Users list.

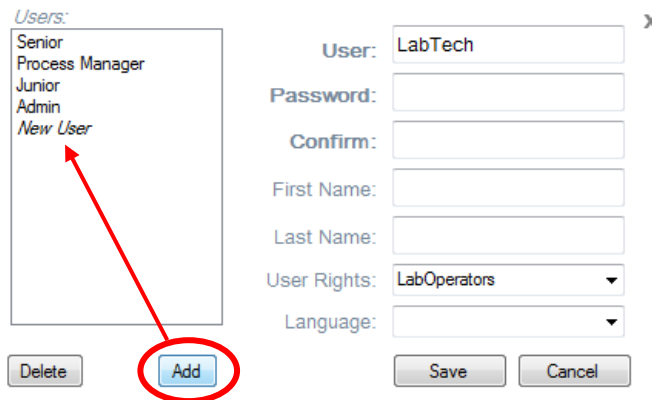


Figure 28

3. Select **New User** from the **Users list** and enter the new **User name (required)**, **Password (required)**, **Confirm (required)** the password by typing it again, **First Name (optional)**, **Last Name (optional)**, and select the **User Rights (required)**.

**NOTE: Language is currently not available to be selected.**

- a. LabManagers – Level of access is yet to be determined
- b. LabOperators – Level of access is yet to be determined
- a. Administrators- Level of access is yet to be determined

4. When done select **Save**.

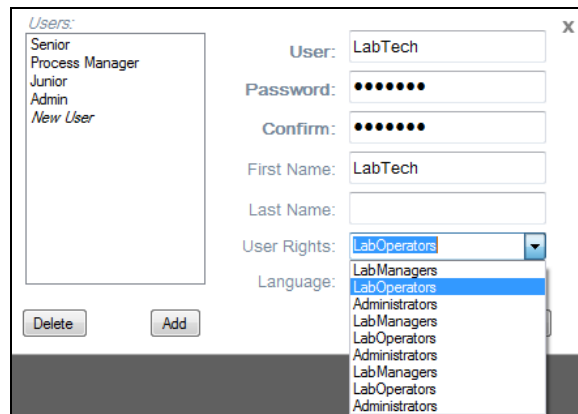
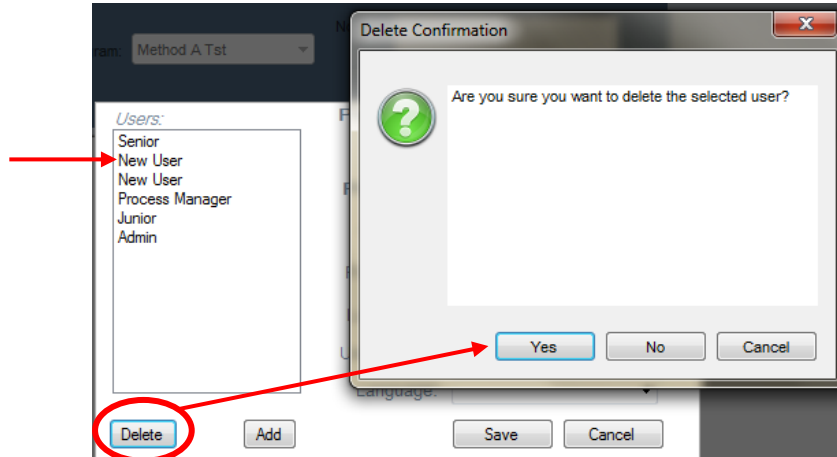


Figure 29



- To delete a User select the user to be deleted and select **Delete**.
- Select **Yes** in the Delete Confirmation window.



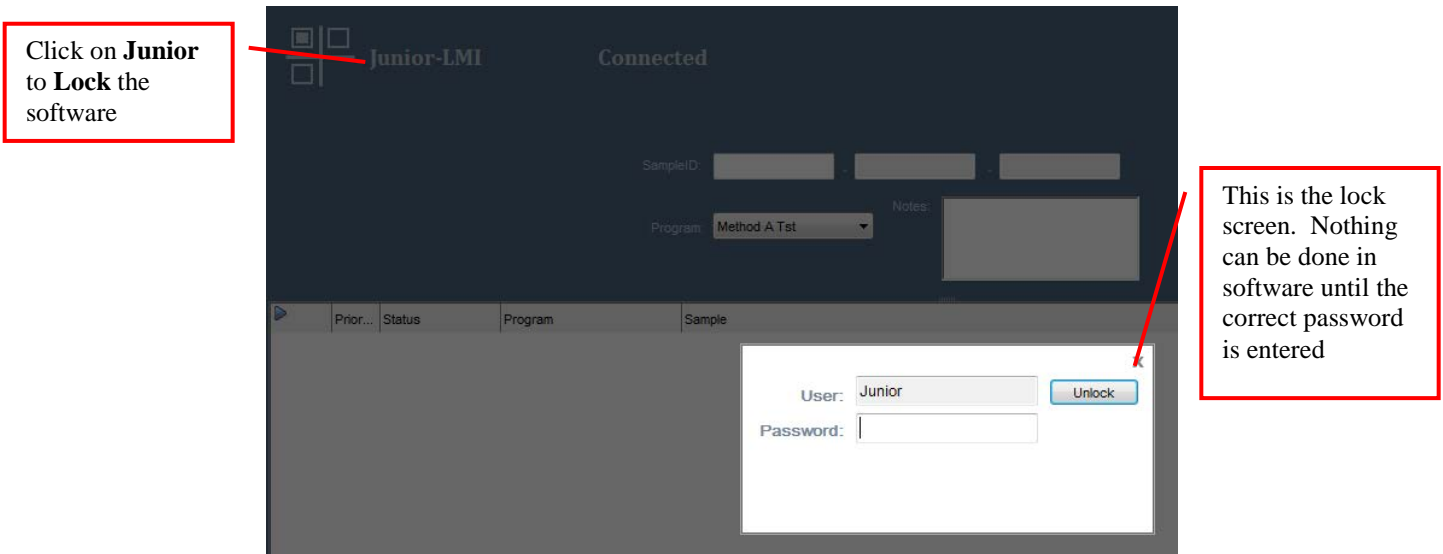
**Figure 30**

- The **Save** button must be selected to delete the User. If the **Cancel** button is pressed **NO USER IS DELETED**.

## How to Lock and Unlock LaVA Suite

There is an option where the software can be locked to prevent anyone from using the software for a short period of time.

- Lock the software by left clicking the mouse over top of the current user logged into software.

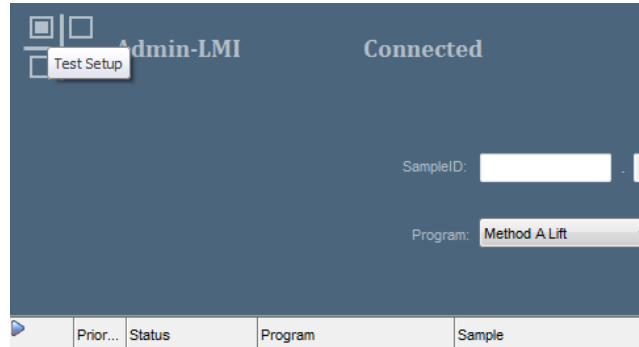


**Figure 31**

- Unlock software by entering the correct password in the password field and selecting **Unlock**.

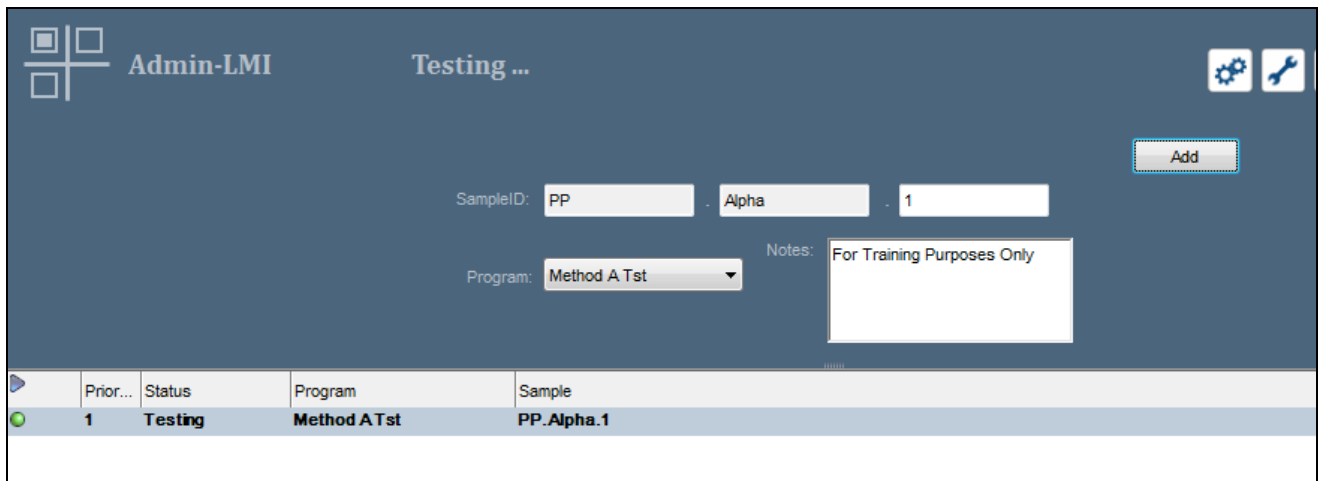
## How to Run a Test

1. Select **Test Setup** from the icon in the top left of the screen to open the Test Setup screen.



**Figure 32**

2. Enter the **Sample ID**, **Product**, and **ID** into the appropriate fields, select the **Program** to be used, and enter any optional **Notes**.
3. Select **Add**, which will add this test to the queue and send the information over to the LMI instrument.



**Figure 33**

4. Select **Run Test** from the icon in the top left of the screen to view the Test Queue and Test Results.

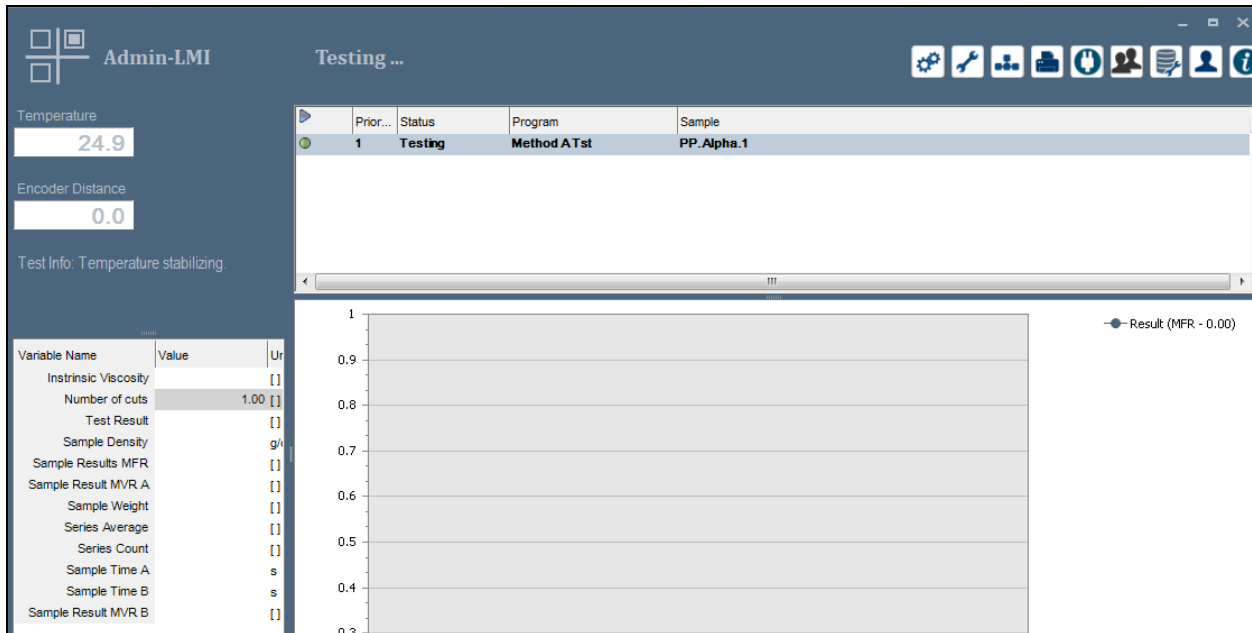


Figure 34



**NOTE:** If LaVA Suite software is closed while a test is running that test will still be in the queue when software is reopened, however the queue will default to pause. The only way to start the queue again is to delete the test at the LMI instrument then select the pause button to “play”, or start the queue.

5. Depending on the test setup there may be several interactions that need to occur at the instrument, like **Load and Pack Material**, **Place weight on the piston**, and **Cut Sample**. Follow all onscreen prompts at the instrument.
6. After the test is complete the **Completed message** will appear.



Figure 35

7. Results can be viewed and analyzed on the **Analyze Result** screen by selecting Analyze Result from the icon in the top left of the screen. Only results from the currently connected instrument can be viewed. To view results from other networked instrument go to **Offline Mode**.
  - a. More information can be viewed by hovering over or selecting a data point on the graph.

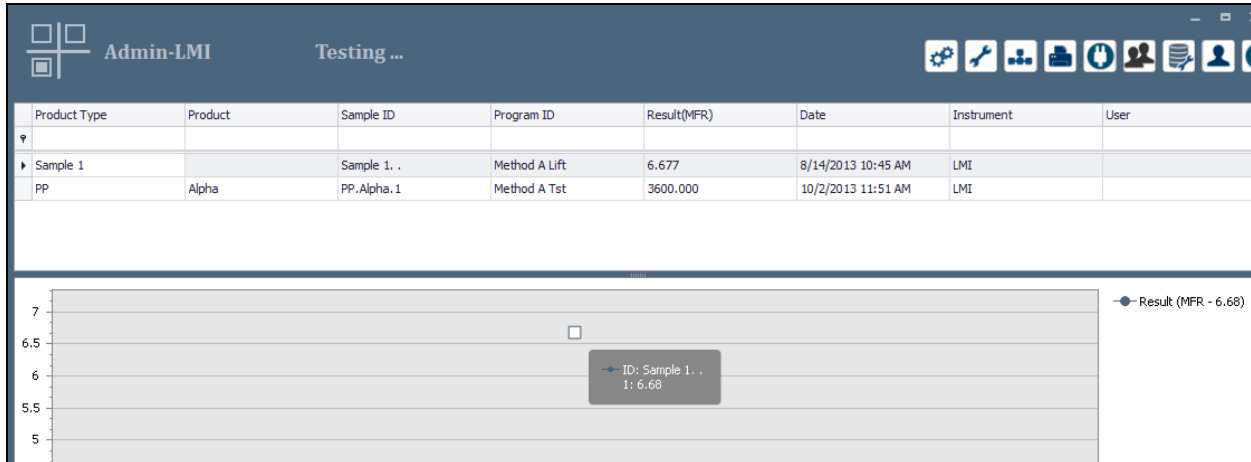


Figure 36

## How to Abort a Test in Progress

To abort a test in progress, select **Test Setup** and select (highlight) the test to be aborted. Select the Play button to pause the queue. Select stop test (Blue Square) on the LMI instrument. Now you can right click on the test and select **Delete**.

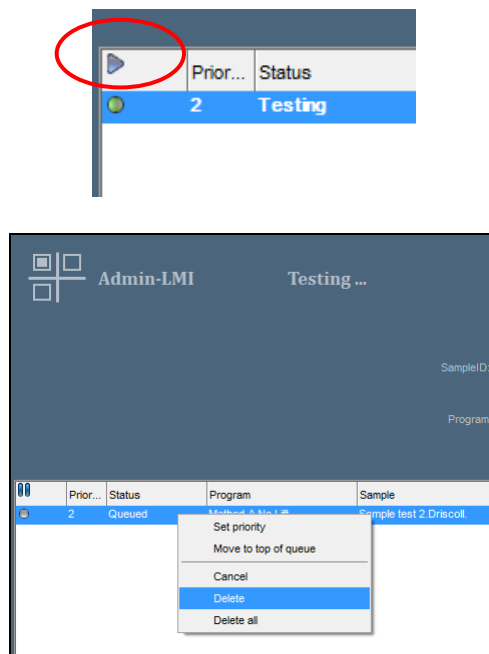


Figure 37

## How to View, Print, or Save Reports

Show Reports allows the user to view the results of the test, Print the results of the test, or Save the results of the test. The Save function will only save the test results in a custom native format that is not viewable outside of LaVA Suite. There is however an option to save to PDF, HTML, Excel, text file or image file.

1. Select **Analyze Result** from the icon in the top left of the screen.
2. Select the test result to be viewed or printed by left clicking the mouse on the line of the test result. The line will highlight in Blue.
3. Select **Show Report** from the Toolbar.



Figure 38

4. The View/Print window will open that allows the user to setup the page, Save, and/or Print the results.

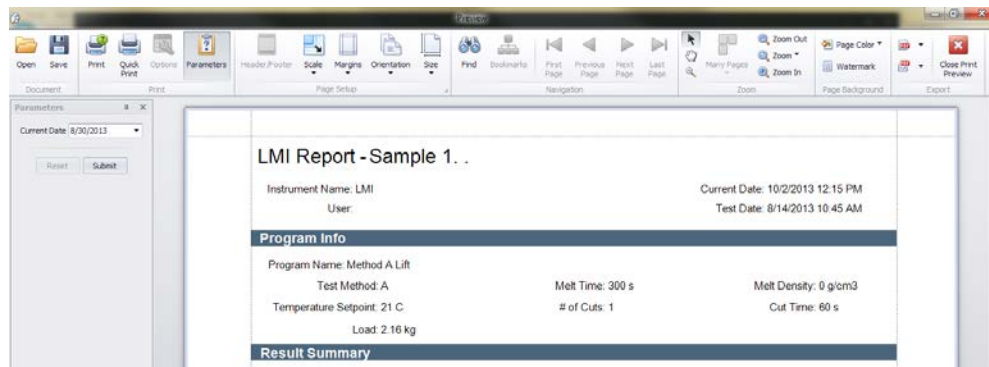


Figure 39

5. Select **Save** to save the results to a native format.prx, applicable to this software only.
6. Select **Print** to print the results.
7. Select the upper PDF icon to **Export to...** and the lower PDF icon to **E-Mail As...** After selecting the icon choose which file format to use. Adjust the PDF Export options as needed when prompted.
8. Select **Close Print Preview** to close the window.

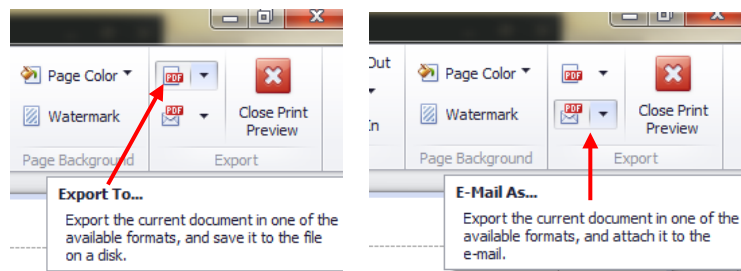
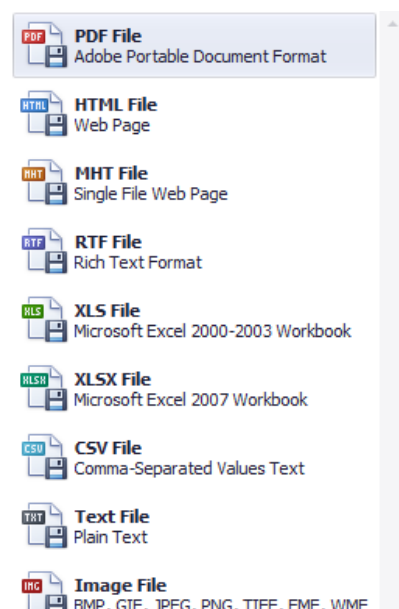


Figure 40



## How to Backup and Restore the Database

To use this icon in Windows 7 LaVA Suite must be selected to **Run as administrator**. This screen allows the customer to backup and restore the database locally or remotely.

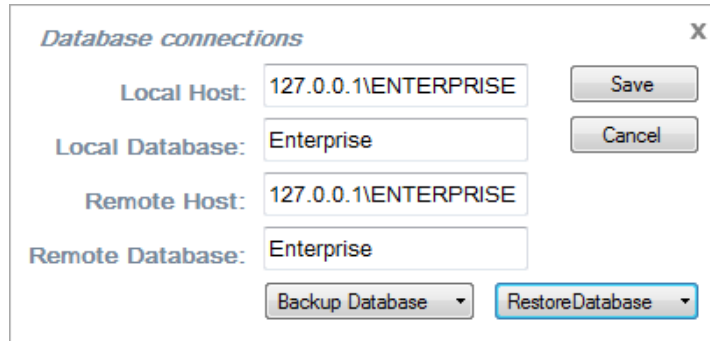


Figure 41

## How to View Information about LaVA Suite

Displays information about LaVA Suite.



Figure 42