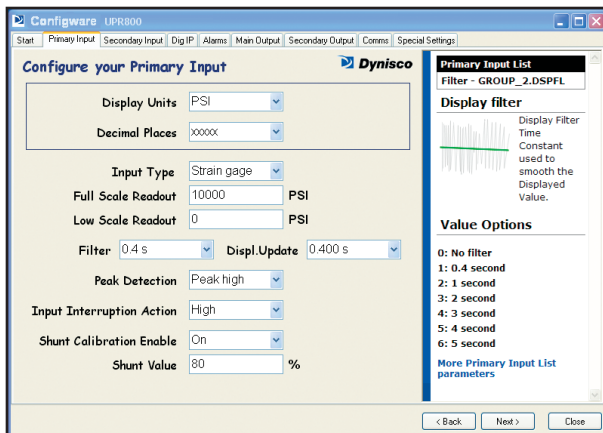


Configware

Software configuration tool for several different Dynisco instrument models



Features

- Configure several different Dynisco instruments with one software package
- PC configuration saves time and effort
- Clone the configuration of one instrument to another
- Save configurations in the event an instrument needs to be re-configured
- The Configware screen is very user-friendly
- A "Help" sidebar makes an intuitive process even easier

Description

Configware is a universal software package that can be used to configure several different Dynisco panel instruments, including the: UPR800 (1/4 DIN Process Indicator), ATC880 (1/4 DIN Process Controller), TCE (Vertical 1/8 DIN Temperature Controller), TCS (1/16 DIN Temperature Controller), 1380, 1390 & 1391 (1/8 DIN Pressure Indicator), 1392 (1/8 DIN Temperature Indicator).

Install Configware on your personal computer and connect the Configurator Port Interface (CPI) via RS-232 port to the Dynisco instrument to be configured. Configware will automatically recognize the instrument model and display the appropriate configuration screens. Using the Configware screen tabs and dialog boxes, select the desired configuration parameters. Use the "Help" tips conveniently located at the right of screen to guide you through your selections.

With configuration parameters selected, save the settings as a backup or clone the configuration into other like models that will employ the same settings.

Specifications

MECHANICAL & PACKAGING CHARACTERISTICS

Operating System, recommended:	300MB of free space Windows 2000/XP/Server 2003 @1GHz, 512MB RAM Windows Vista @1.5GHz, 1GB RAM
Operating System, min:	300MB of free space Windows 2000/XP/Server 2003 @1GHz, 256MB RAM Windows Vista @1.5GHz, 512MB RAM
Package Includes:	CPI module with 5-pin clip and RS-232 connector*; Configuration software (CD); Power supply; International plugs (USA/Japan, EC, UK); Instructions
Termination:	5-pin clip (to instrument); RS232 serial port (to PC)
Operating Temperature:	32 to 104°F (0 to 40°C)
Storage Temperature:	-22 to 158°F (-30 to 70°C)
Humidity:	85% relative humidity, non-condensing
Weight (package):	1.2 pounds (545g)

APPROVALS & CERTIFICATIONS

CE Mark:	89/336/EEC Directives (EN 61 326) 73/23/EEC & 93/68/EEC Directives (EN 61010-1)
-----------------	--

POWER SUPPLY (MAINS)

Power Supply Power:	100-240Vac
CPI Module Power:	7.5Vdc ±5%
CPI Module Current:	400mA, max
CPI Module Consumption:	3W, max

*Users preferring direct USB may secure a USB-to-serial connector locally.

Ordering Guide

Order Model CPI

Spare or replacement parts include CPI Clip, CD Configurator, and Power Supply. Contact the factory for part numbers and pricing.